

*This is  
Frankoma*

# FRANKOMA POTTERY

*A fine example of the potter's art, preserved forever in fired clay!*

To say, "There is nothing new under the sun," is not quite true. Having been created in His own image, we all have been endowed by our Creator, among other important things, with the ability to *create* — to take the natural raw materials of God's creation and by applying these gifts of creation, present to the world a new thought, if not a new material, which we can say is *ours!* This is the artist's challenge!

True it is, that we are affected and influenced by all that we have seen and been taught from birth. But, we can by choice, reject the bad and irrelevant, choose and combine new associations of lines, masses and colors into inspiring new forms, yes, new *creations* — and present to the world a "thing of beauty" which will enhance our surroundings "forever." Frankoma accepts that kind of a challenge.

We have endeavored to tell our story simply, in the oldest of all art materials — clay. We have used as inspirations the materials at hand here in the Southwest — wagon wheels, cattle brands, the plains, Indian lore, cactus and other natural forms, as well as just pure simple beautiful lines and masses that are revelant only to themselves — "*Free Forms,*" if you please. We inherited the traditional art of the Indians, the spirit of the American pioneer, and the creative tendencies of the youth of the great Southwest and molded them into good pottery forms. Each piece is designed by Frankoma, to be a contribution to the art of potting and fine ceramics and to be both useful and beautiful.

Our blended colors are created and ground by us, and they also reveal their natural surroundings and heritage — Prairie Green, Desert Gold, Red Bud, Onyx Black, White Sand, and Clay Blue. They are fired high and long to be hard, lustrous and oven proof — to *serve* you well.

We sincerely hope you will enjoy living with Frankoma Pottery as much as we do creating it. Frankoma is more than a name of a pottery, it is the embodiment of our personal artistic philosophy. It can only serve one purpose — whether it is a plate, pitcher or flower bowl—that by its association your life and surroundings might be a bit happier.

*Grace Lee Frank*

*John Frank*

# FLOWER ARRANGEMENTS AND CONTAINERS

Flower arranging is placing on exhibition the beautiful flowers, foliage, and branch forms that only God can sculpture and paint. When the exhibitor sees the beauty of his composition penetrate through the room it occupies, there is a joy and satisfaction that truly feeds the soul.

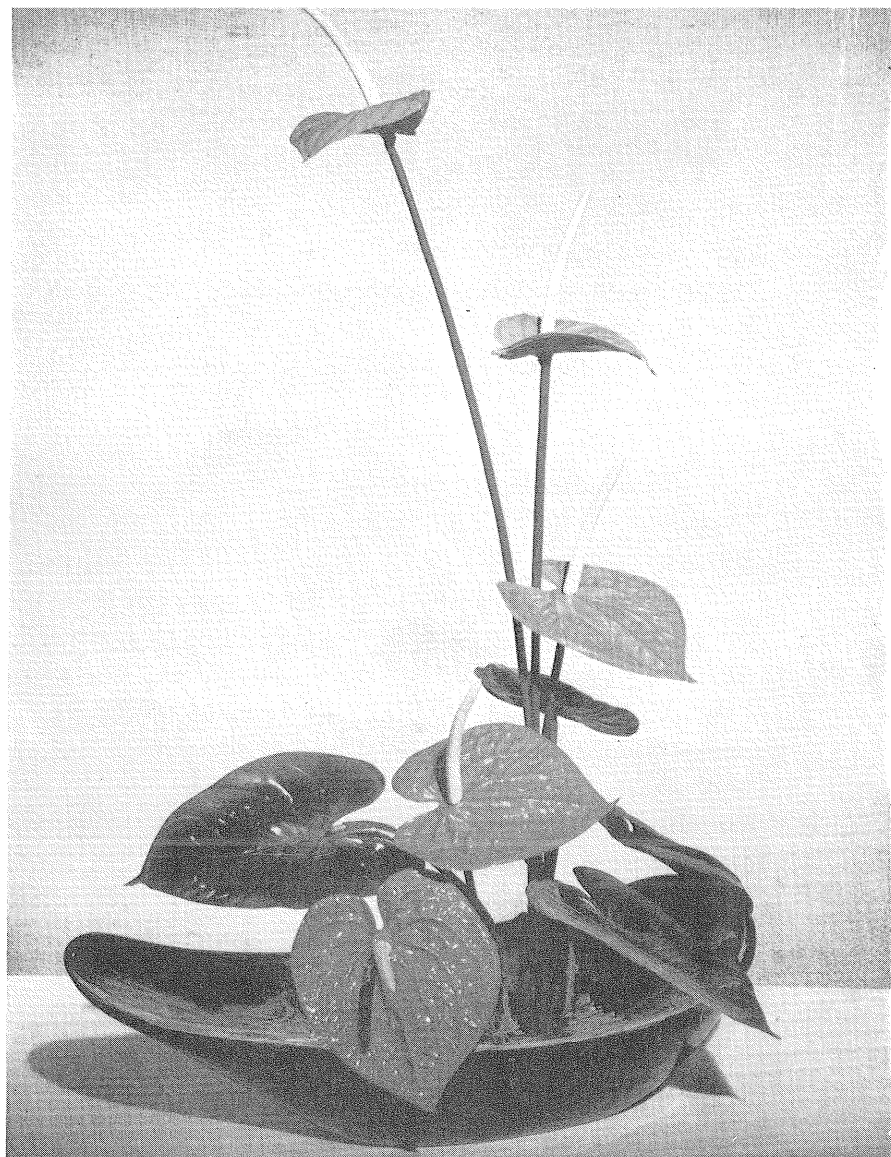
Flowers sound the color note in your room. And if you go about arranging them in a happy mood you can make the line of your composition swing to the tempo you desire.

To build a flower arrangement you must first have a foundation and your container should serve you in that capacity. Although it is not the most prominent feature, it is of utmost importance. Therefore, you should select containers in quiet, subdued colors. Frankoma's earthen matt glazes are ideal for color and texture.

A container should have simple, sculptured shapes to allow one more freedom in bringing out the desired line accent. The lines of your container should be subtle, yet strong enough to give the arrangement security. Frankoma containers are designed with this in mind. If simplicity is your keynote you will not be disturbed by confusing lines and intricate patterns.

Good taste bids us keep the flowers in an environment suitable to their type for the background is to an arrangement what the frame is to a picture. Choose your flowers carefully as to color, for it creates the first emotional effect. They should also be interesting in form and character. For a bouquet to qualify as an arrangement, it should have line, color and pattern. Textures should be combined to harmonize and justify their association together. Check the combination of materials and textures to be sure there is a relative harmonious relationship.

Your foliage should be selected with equal care and placed as purposefully. You will find many surprises and thrills when you look through the large variety of intense colors and gorgeous shapes of plant foliage. It is very important that you cut out all unnecessary leaves or



branches that will make your arrangement look clustered. It is everyone's desire to make their arrangement look fresh and clean-cut.

A well-balanced composition should have a main line that will govern the other two basic lines of the design. Sometimes it is the foliage, sometimes the flowers themselves, and often the branches that produce these lines. If you allow the stems to cross each other they are liable to cause friction and you lose your harmonious and rhythmic feeling.

To make this exhibit we have talked about, you will need some tools — as much so as you need pots and pans to cook a meal. It is well to have a small basket to keep your clippers, flower holders, floral clay, and wire conveniently together, and then there is no time lost in looking for misplaced equipment.

It might be fun to think of your container as a stage. Pick your leading characters and make them your center of interest. The less important flowers and foliage complete your show and together they can tell a beautiful and romantic story.

# WAGON WHEELS

THE ROMANCE OF THE WEST lives on with our WAGON WHEEL Pottery! The pitchers are quaint and practical. The cup is the hub of a wheel, and the "good luck" horseshoe makes the handles for the baker. There are bands of battle brands on the platters and bowls. The whole set is an application of the fine designs one can find on any ranch.

A most colorful part of the history of the Southwest is the cattle industry, and the rancher's "coat of arms" is his "cattle-brand." The covered wagon, "wagon wheels," horses, the cowboys, cattle, the "little dogie," and above all, the "cattle-brand" are symbols of this natural industry. The cattle-brand is the symbol of the rancher, and it identifies his proudest possessions. It is the family trademark, handed down from generation to generation.

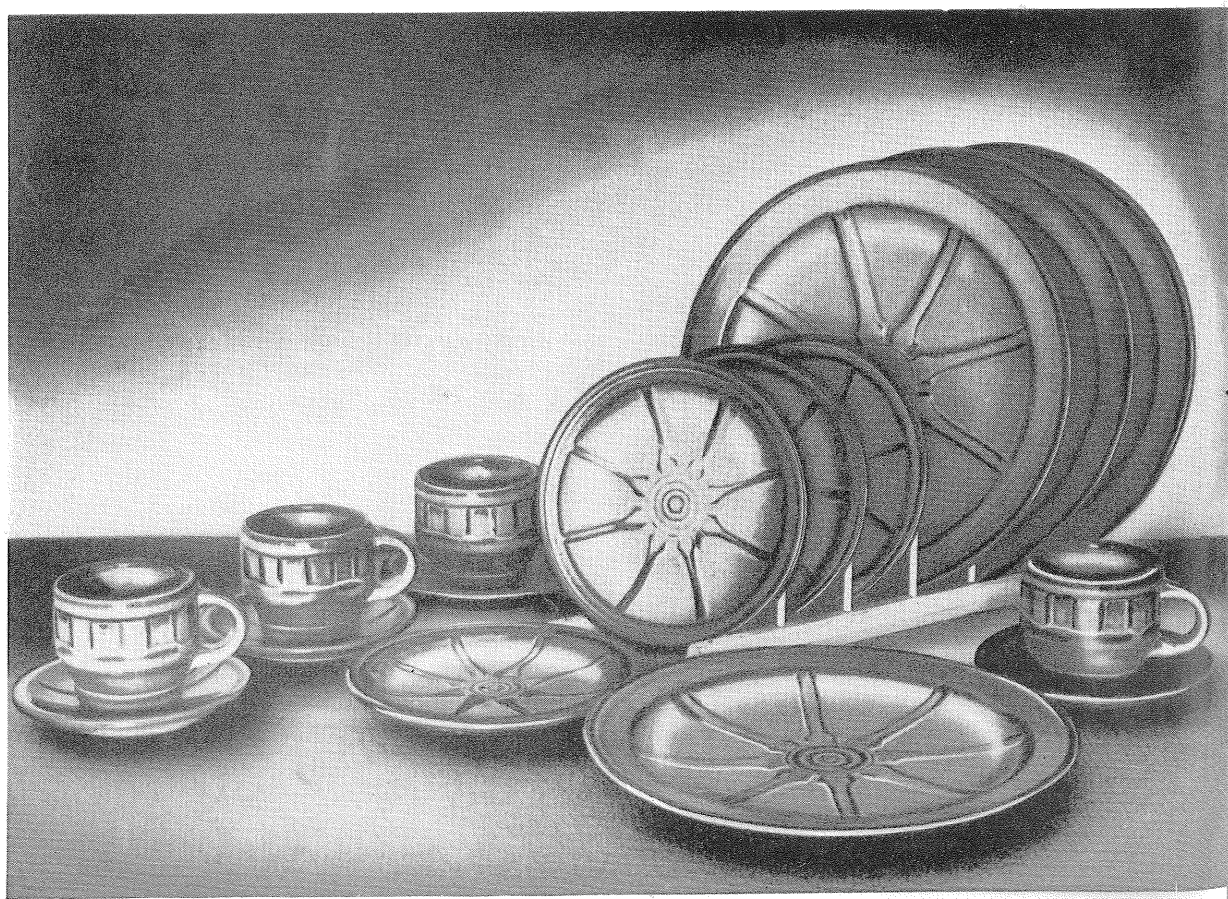
Many of these brands are fine designs, and most of them have a definite meaning. Some are the initials of the owner, others may refer to hills on the ranch, the number of acres he owns, the number in the family, his monogram, a key, a hat, or any one of a thousand items of interest. Each brand is usually registered in the county in which it is used.

We are proud to take this opportunity to eulogize these pioneers of the Southwest, and include a number of these brands in decorating some of the pieces of our WAGON WHEEL set. Every piece is oven-proof.

Available in Prairie Green, and Desert Gold.

16 piece starter set  
individually boxed

\$14.00





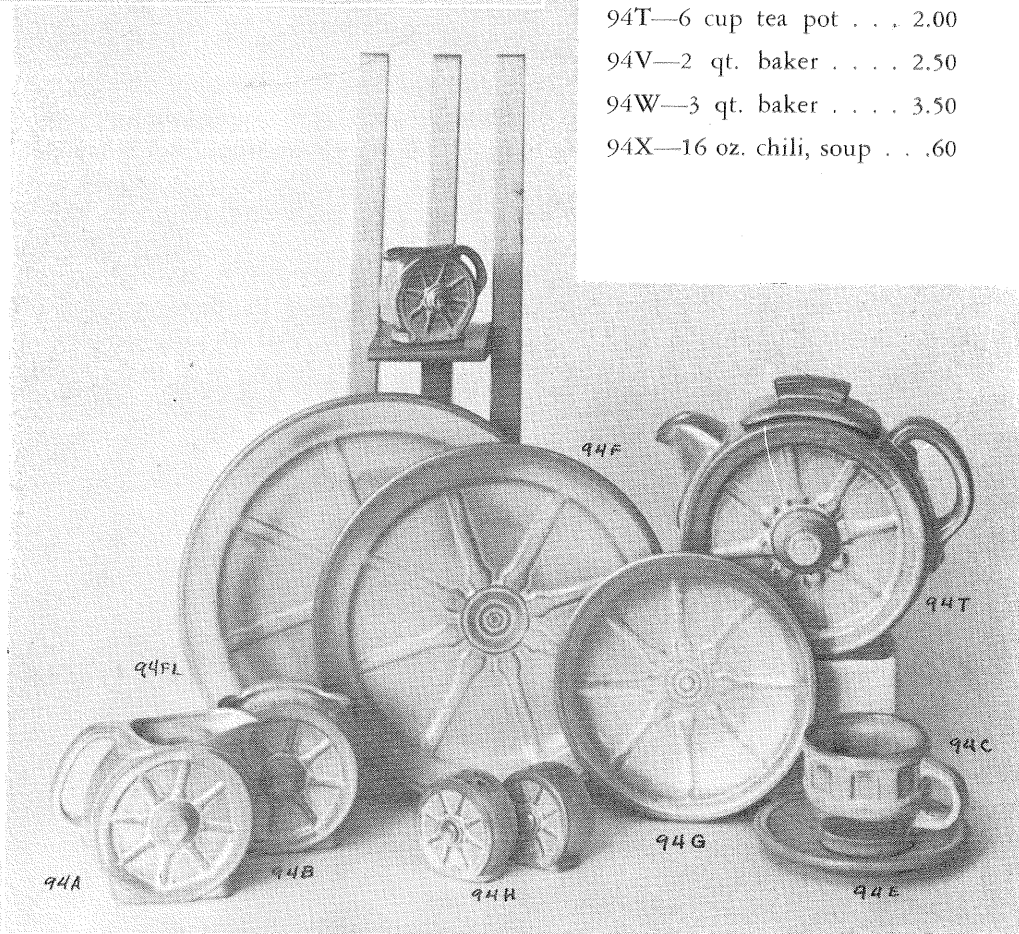
- 94A—3 oz. creamer . . . 1.00
- 94B—8 oz. sugar . . . . . 1.00
- 94C—5 oz. cup . . . . . .75
- 94D—2 qt. pitcher . . . . . 2.00
- 94E—5 in. saucer . . . . . .75
- 94F—9 in. plate . . . . . 1.50
- 94FL—10½ in. plate . . 1.60
- 94G—7 in. plate . . . . . .80
- 94H—salt and pepper . . 1.00
- 94J—2 cup tea pot . . . . 1.20
- 94M—16 oz. mug . . . . . 1.00
- 94N—1 qt. service dish . 1.50
- 94P—16 in. platter . . . . 5.00
- 94Q—13 in. platter . . . . 2.50
- 94T—6 cup tea pot . . . . 2.00
- 94V—2 qt. baker . . . . . 2.50
- 94W—3 qt. baker . . . . . 3.50
- 94X—16 oz. chili, soup . . .60

## CAPTURING

*the hospitality of our early pioneers, for those who have learned the pleasures of casual living.*

# WAGON WHEELS

Oven-proof Dinnerware



- 94XL—24 oz. bowl . . . 1.00
- 94XO—5 oz. dessert bowl .50
- 4K—covered butter dish . 1.50
- 80C—12 oz. tumbler . . .75
- 510—individual sugar . . .50
- 560—individual creamer . .50

# Oklahoma Plainsman

For thousands of years men have gloried in creating "atmosphere" around their favorite sport — eating. Harmonious and beautiful surroundings not only add to the pleasure of eating but make it a healthier pastime. We still lavish all we possibly can on our banquets and feasts, for we love to eat.

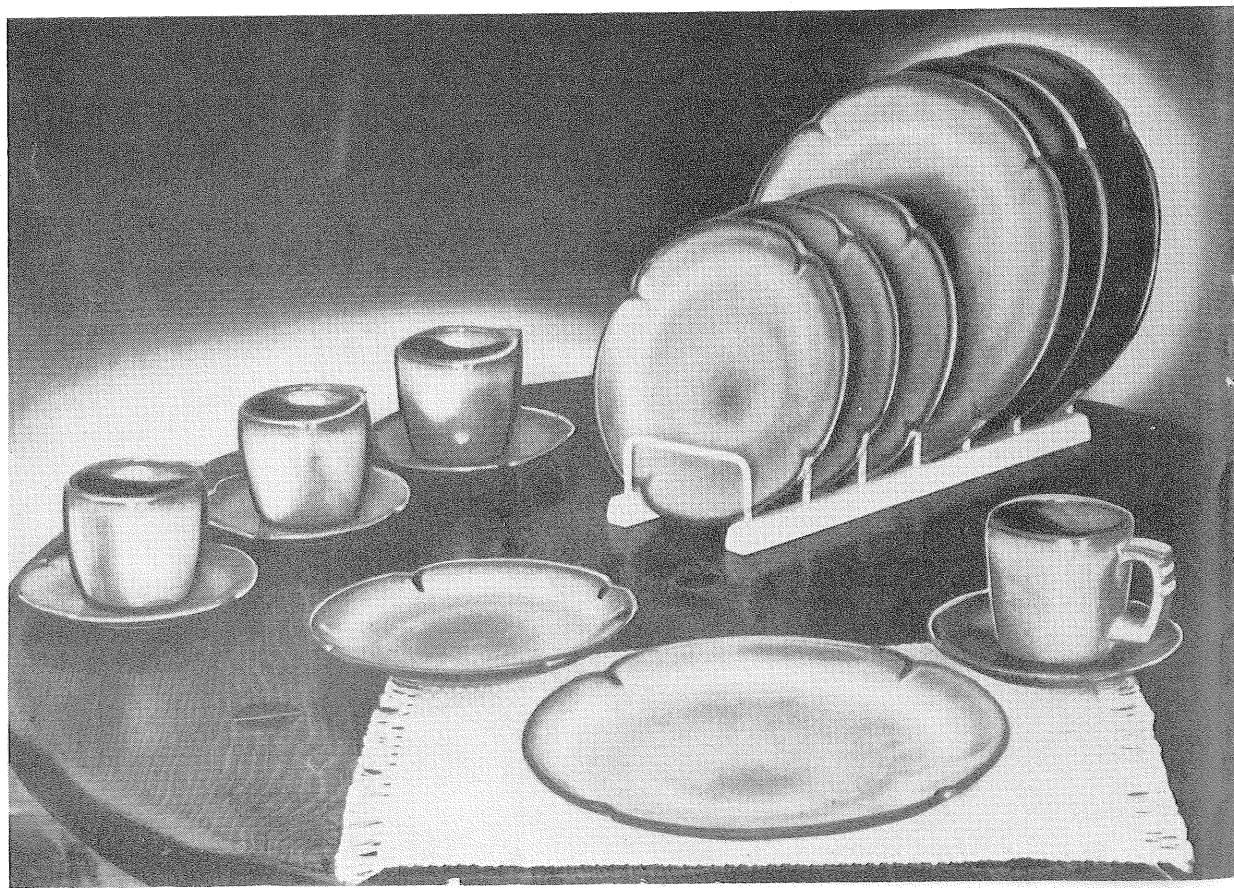
Men have always managed to devise some sort of receptacle to hold food, either raw or prepared, and the quality and value of his utensils depend more on his love of beauty and ability to create than the size of his purse. Of the many materials used throughout the centuries, in all countries of the world — iron, copper, brass, stone, wood, silver, and even gold, ceramics has remained the favorite of all eating vessels.

Since the acceptance of "whiteware" in the sixteenth century, most fine tables have been set with "dinnerware" or "china." This is sometimes a white earthenware, or a compounded china body, or even a translucent true porcelain. Its quality depends on the selection and handling of the materials plus its Art value expressed in line, form and color.

Today, from the crudest earthenware to the finest porcelain, we still choose CERAMICS of some kind for our table. Although we would not eliminate "white-wares," we love our modern pottery tableware. Why not? It is gay, happy, and colorful, and surely fits into our modern mode of living. It is with this in mind that we have created FRANKOMA TABLEWARE.

For one design we have gone to the Great Plains of the Southwest and offer you the "OKLAHOMA PLAINSMAN" pattern. Its well chosen, simple lines and sturdy shapes create an atmosphere befitting its heritage. It is most appropriate "for fun or fashion." Every piece is oven-proof.

Available in Prairie Green, and Desert Gold.



16 piece starter set  
individually boxed

\$14.00



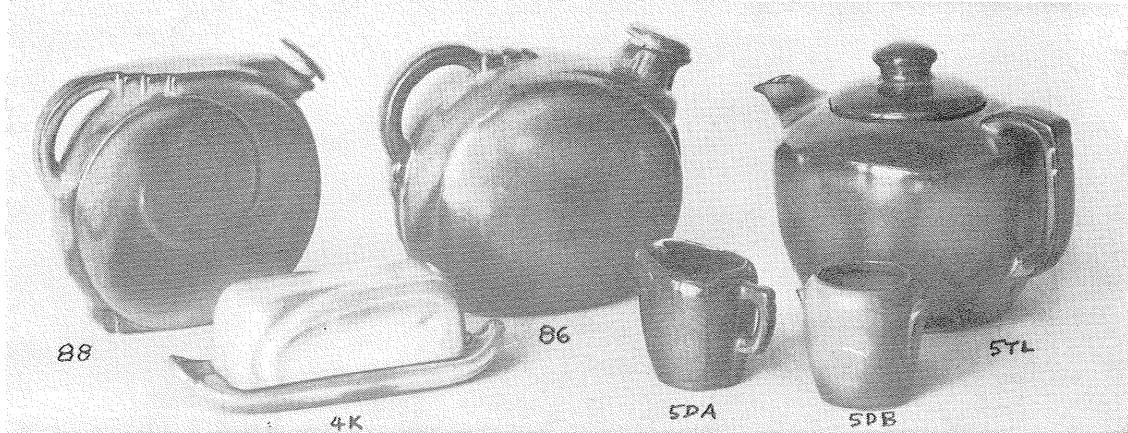
- 5A—12 oz. creamer 1.00
- 5B—12 oz. sugar . 1.00
- 5C—7 oz. cup . . . .75
- 5CL—12 oz. mug . . .80
- 5D—3 qt. ice guard pitcher . . . 3.00
- 5E—6 in. saucer . . .75
- 5F—10½ in. plate . 1.60
- 5G—8 in. plate . . 1.00
- 5GS—7 in. plate . . .80
- 5HS—salt and pepper, pair . . . . . 1.00
- 5L—12 oz. tumbler .75

# The Plainsman



- 5M—16 oz. mug . . 1.00
- 5ND—Cheese dip dish . . . . . 2.50
- 5NS—9 in. service bowl . . . . . 2.00
- 5P—16 in. platter . 5.00
- 5Q—13 in. platter . 2.50
- 5S—28 oz. gravy boat . . . . . 1.50
- 5T—6 cup tea pot . 2.00
- 5TL—12 cup pot . . 3.50

- 5V—2 qt. baker . . . . . 2.50
- 5W—3 qt. baker . . . . . 3.50
- 5X—16 oz. soup, or cereal . .60
- 5XL—24 oz. salad or service 1.00
- 5XS—10 oz. dessert bowl . .60
- 5DA—small creamer . . . . .75
- 5DB—small sugar . . . . .75
- 4K—butter dish . . . . . 1.50
- 86—2 qt. water jug . . . . . 2.00
- 88—1½ qt. water jug . . . . . 2.00



# LAZYBONES

## *Sculptured Free Form Tableware*

Our American homes are being designed and built so that home makers can take advantage of the many modern conveniences, yet develop their own personalities in color and styling.

The furnishings for these contemporary homes are practical and simplified. They must be selected carefully to preserve a cordial atmosphere, which we all wish for our family and friends.

Frankoma was sensitive to these trends when this new dinnerware was being designed. The atmosphere surrounding LAZYBONES is relaxing, for you are influenced by its free flowing sculptured lines. As you accept the invitation to handle and caress each piece, you will love the way they fit the contour of your hands, for immediately they become a part of you.

Food cooked in Lazybones can go from the oven to the table — and there are so many uses for each piece. They are designed to serve!

Notice the array of Frankoma's colors. They are the gourmet's delight, for they all compliment your food and share in making every meal an occasion. The shapes themselves are both practical and beautiful.

When you set your table with Lazybones, you are set to relax, and enjoy your share of casual living. It will be the "Talk of the Table" with your family and friends.

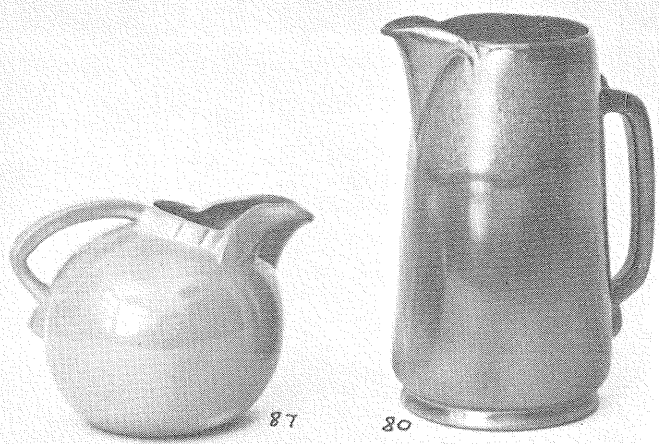
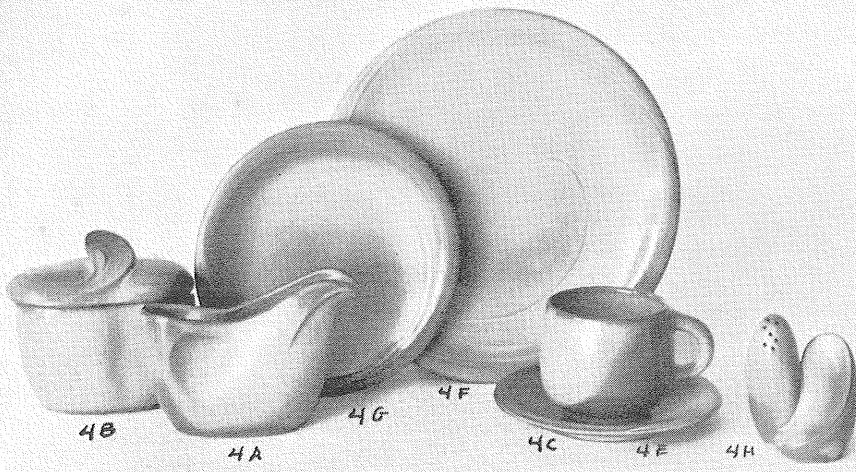
Available in Prairie Green, Desert Gold, Clay Blue.

16 piece starter set  
individually boxed

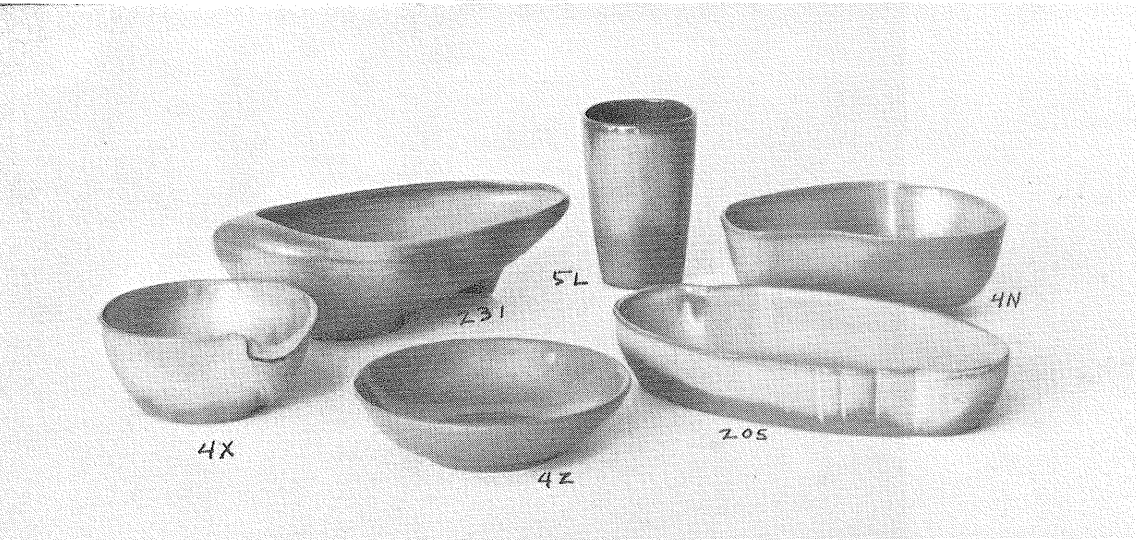
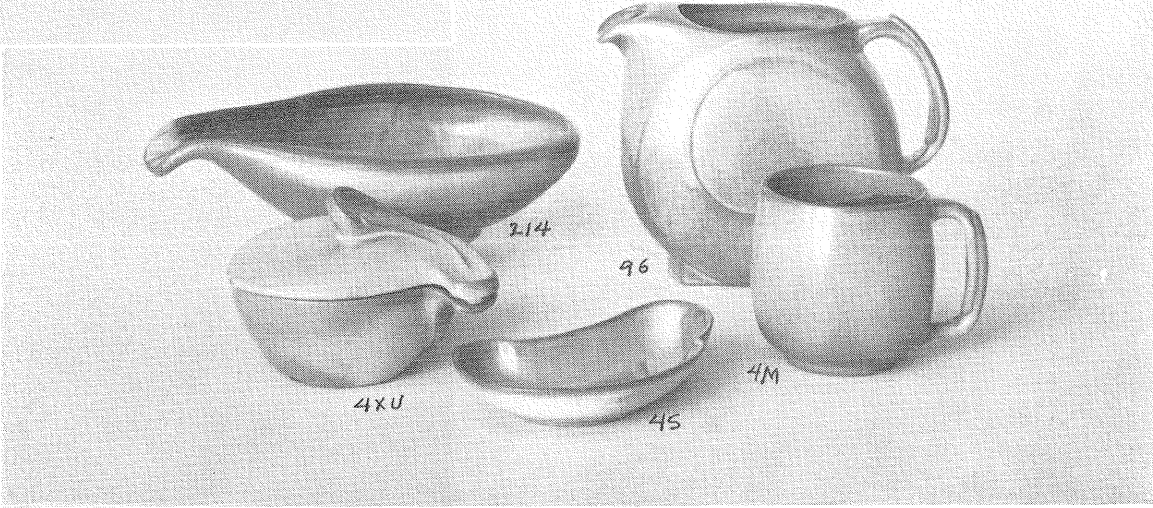
\$14.00





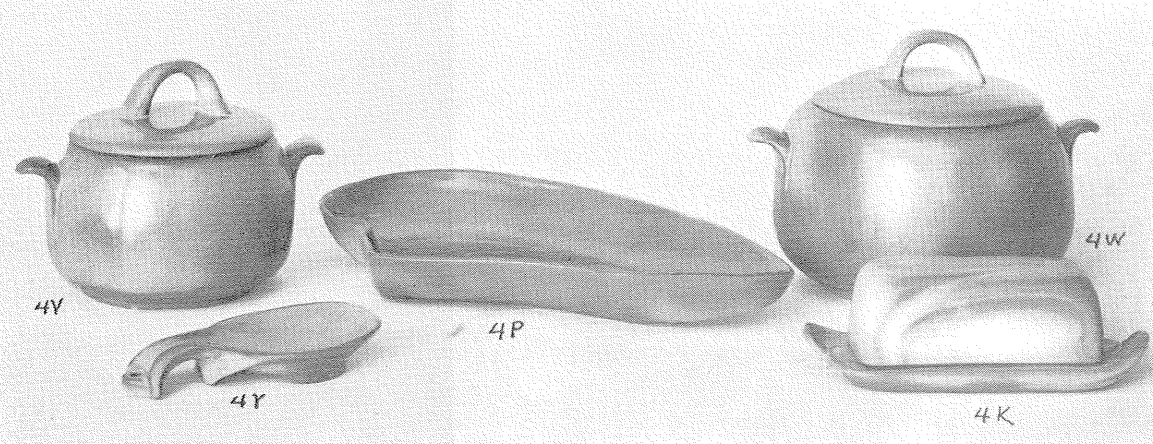


- 4A—8 oz. creamer . . . . . 1.00
- 4B—8 oz. sugar . . . . . 1.00
- 4C—5 oz. cup . . . . . .75
- 4D—2 qt. pitcher . . . . . 2.00
- 4E—5 in. saucer . . . . . .75
- 4F—10 in. plate . . . . . 1.60
- 4G—7 in. plate . . . . . .80
- 4H—salt and pepper . . . . 1.00



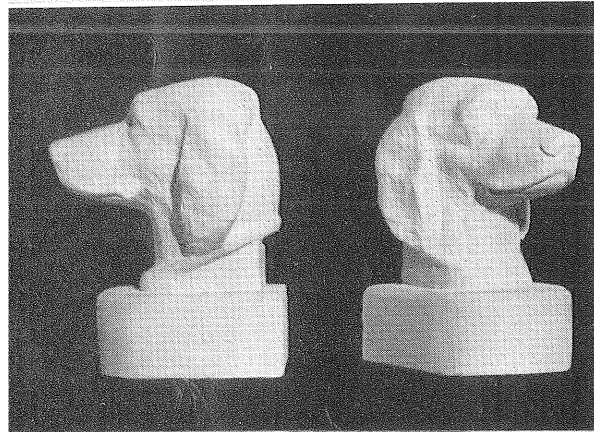
- 4K—covered butter dish . 1.50
- 4M—16 oz. mug . . . . . 1.00
- 4N—service bowl . . . . . 1.25
- 4P—13 in. platter . . . . . 2.50
- 4S—bone dish . . . . . .80
- 4V—1½ qt. baker . . . . . 2.50
- 4W—3 qt. baker . . . . . 3.50
- 4X—16 oz. bowl . . . . . .80
- 4XU—covered bowl . . . . 1.50

- 4Y—spoon holder . . . . . 1.00
- 4Z—6¼ in. salad bowl . . 1.00
- 5L—tumbler . . . . . .75
- 80—2 qt. pitcher . . . . . 2.00
- 87—1 qt. pitcher . . . . . 1.50
- 205—10 in. service bowl . 1.50
- 214—12 in. service bowl . 2.00
- 231—11 in. service bowl . 2.00



# CLASSIC

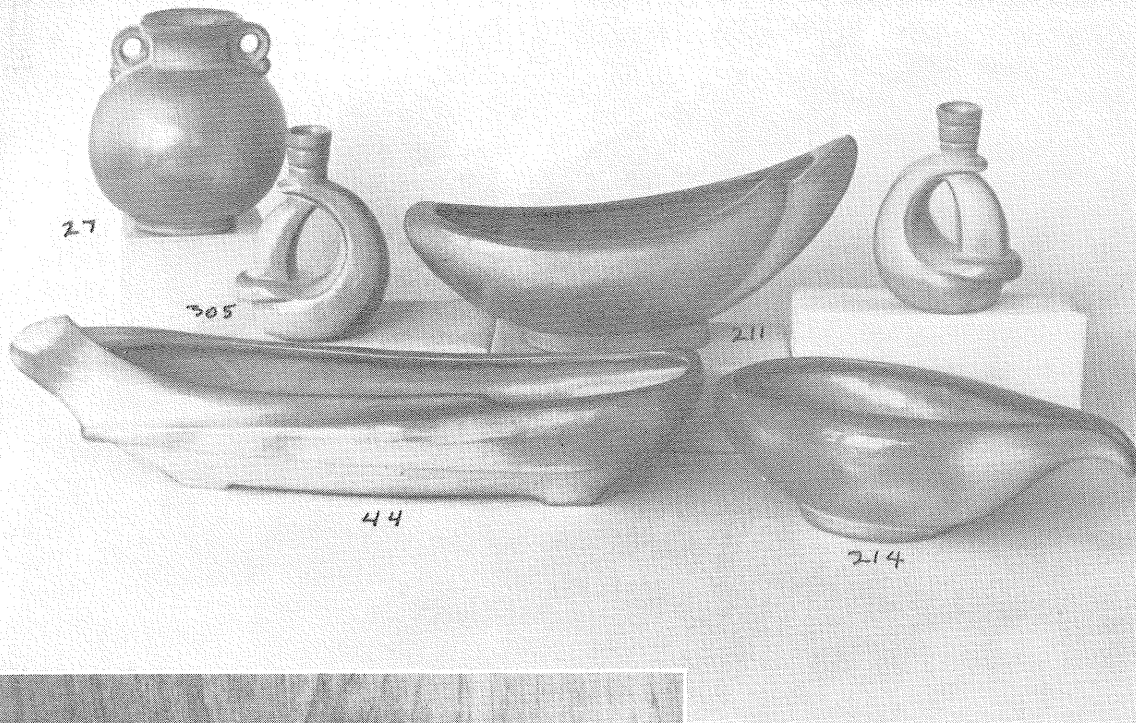
—refined, sculptured  
traditional, forms.  
—outstanding treasures  
of fine ceramics.



- 113—fan dancer, 13 in. . . . . 5.00
- 304—candle holders, pair . . . . . 2.00
- 430—Irish Setter book ends, pair . . . 4.00
- 114—seated puma, 7 in. . . . . 1.50
- 116—reclining puma, 9 in. . . . . 3.50
- 77—tall fireside vase, 17 in. . . . . 7.00
- 77A—tall fireside pitcher, 17 in. . . . 7.00
- 225—small leaf, 7 in. . . . . 1.00
- 226—medium leaf, 11 in. . . . . 1.50
- 227—large leaf, 17 in. . . . . 5.00

PAGE 10



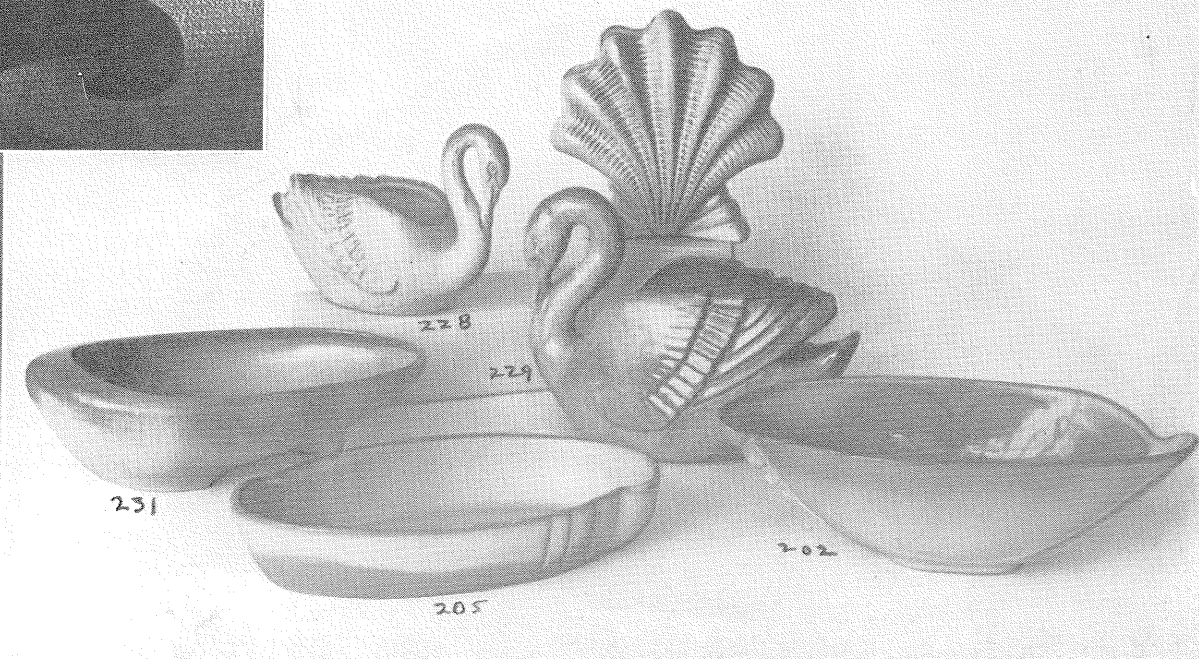
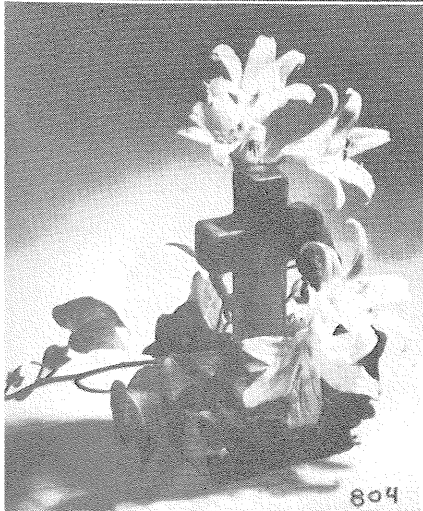
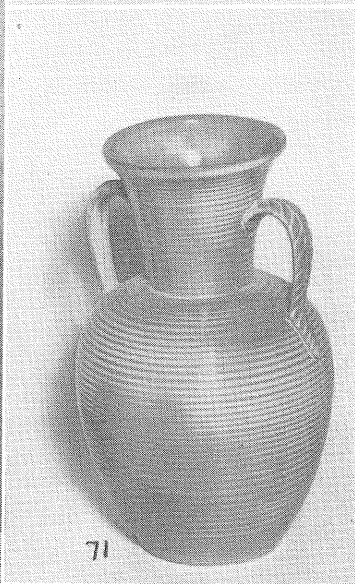
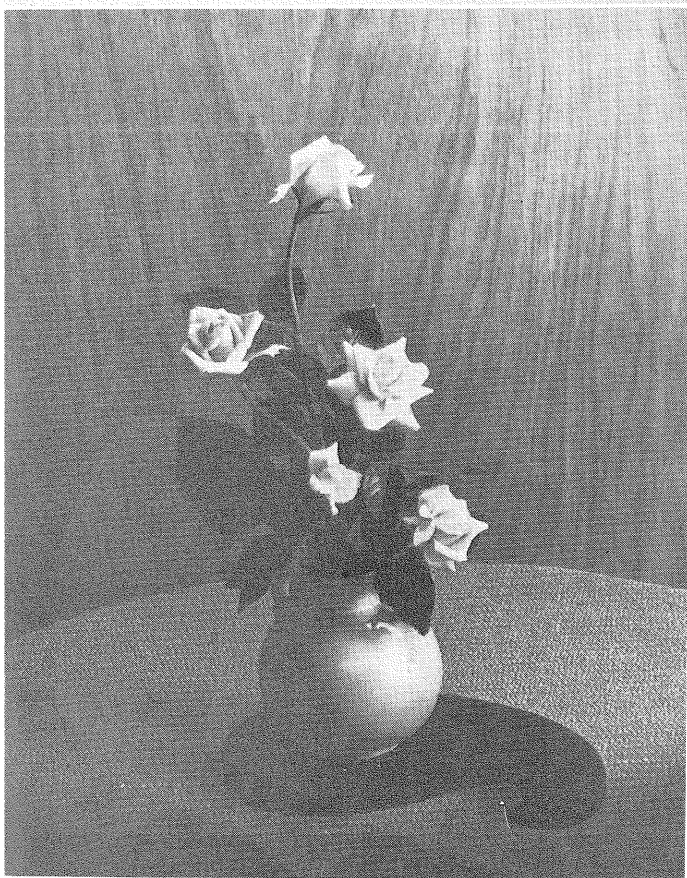


- 27—round handled vase,  
7 in. . . . . 1.50
- 44—long, deep centerpiece  
bowl, 18 in. . . . . 5.00
- 54—shell vase, 6 in. . . . . 1.50
- 71—leaf handled vase,  
10 in. . . . . 3.00
- 202—deep, shaped bowl,  
11½ in. . . . . 2.00
- 205—low oblong bowl,  
10 in. . . . . 1.50
- 211—crescent bowl,  
12½ in. . . . . 2.50
- 214—free form bowl,  
12 in. . . . . 2.00
- 228—swan vase, 7½ in. . . . . 1.50
- 229—swan vase, 9 in. . . . . 3.50
- 231—abalone shell bowl,  
11 in. . . . . 2.00
- 305—single candle holder,  
pair . . . . . 2.00
- 804—cross, mounted on  
flower holder base,  
6½ in. . . . . 1.00

# Frankoma Containers

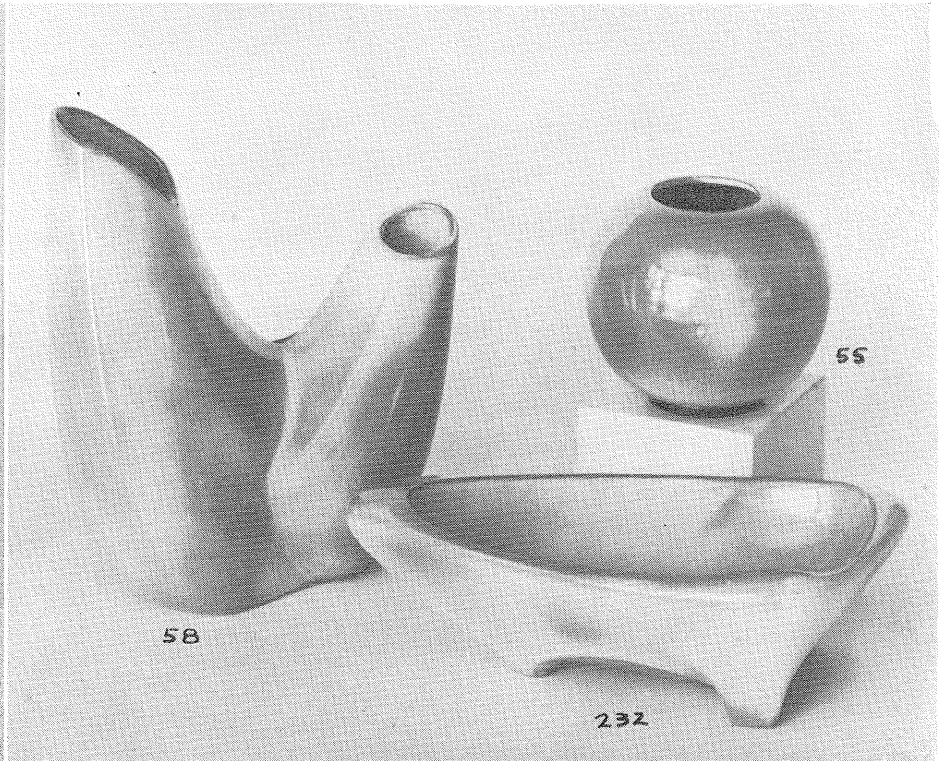
are the foundation of  
beautiful arrangements.

PAGE 11



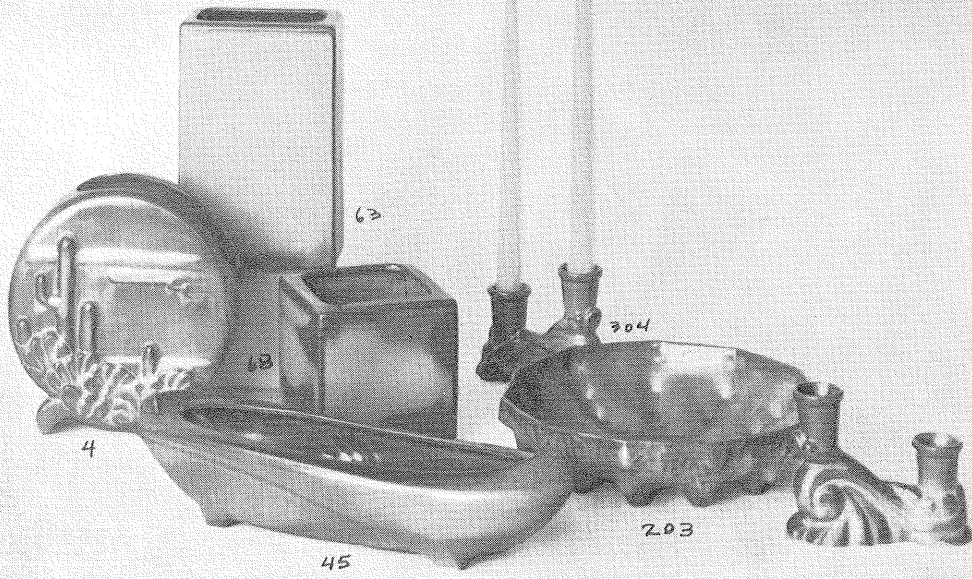
# Sculptured Free Forms

*modelled in  
the casual  
modern trend.*



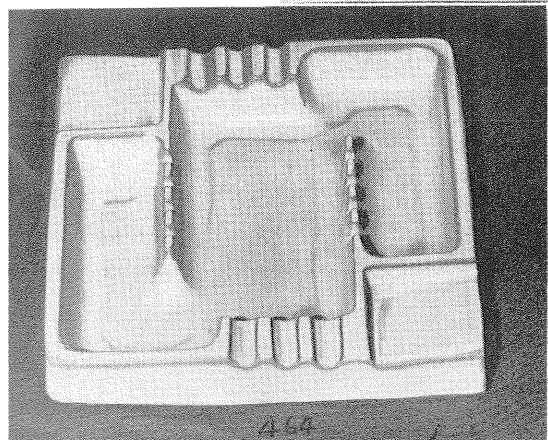
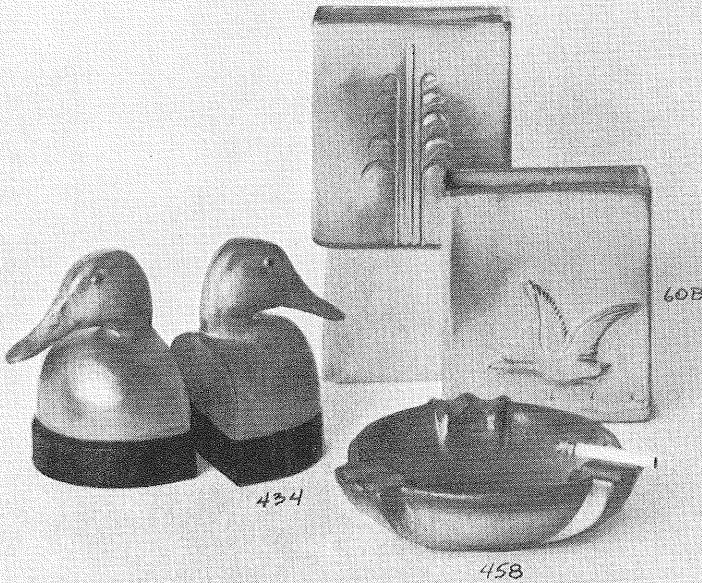
- 6—deep free form vase 7 in. . . . . 1.50
- 43—large bud vase, 8 in. . . . . 1.00
- 52—pedestalled urn vase, 8 in. . . . . 2.50
- 55—ball vase with black foot, 5 in. . . 1.50
- 58—free form, 3 level vase, 9½ in. . 3.50
- 217—large free form centerpiece,  
18 in. . . . . 5.00
- 232—triangle free form bowl, 11 in. . 2.00
- 233—round bowl . . . . . 1.50
- 234—deep free form bowl, 8 in. . . . . 1.50
- 420—charger horse book ends, pair . . 4.00
- 452—free form ash tray . . . . . 1.50
- 455—draft proof ash tray . . . . . 1.50

# Beautiful Practical Servicable



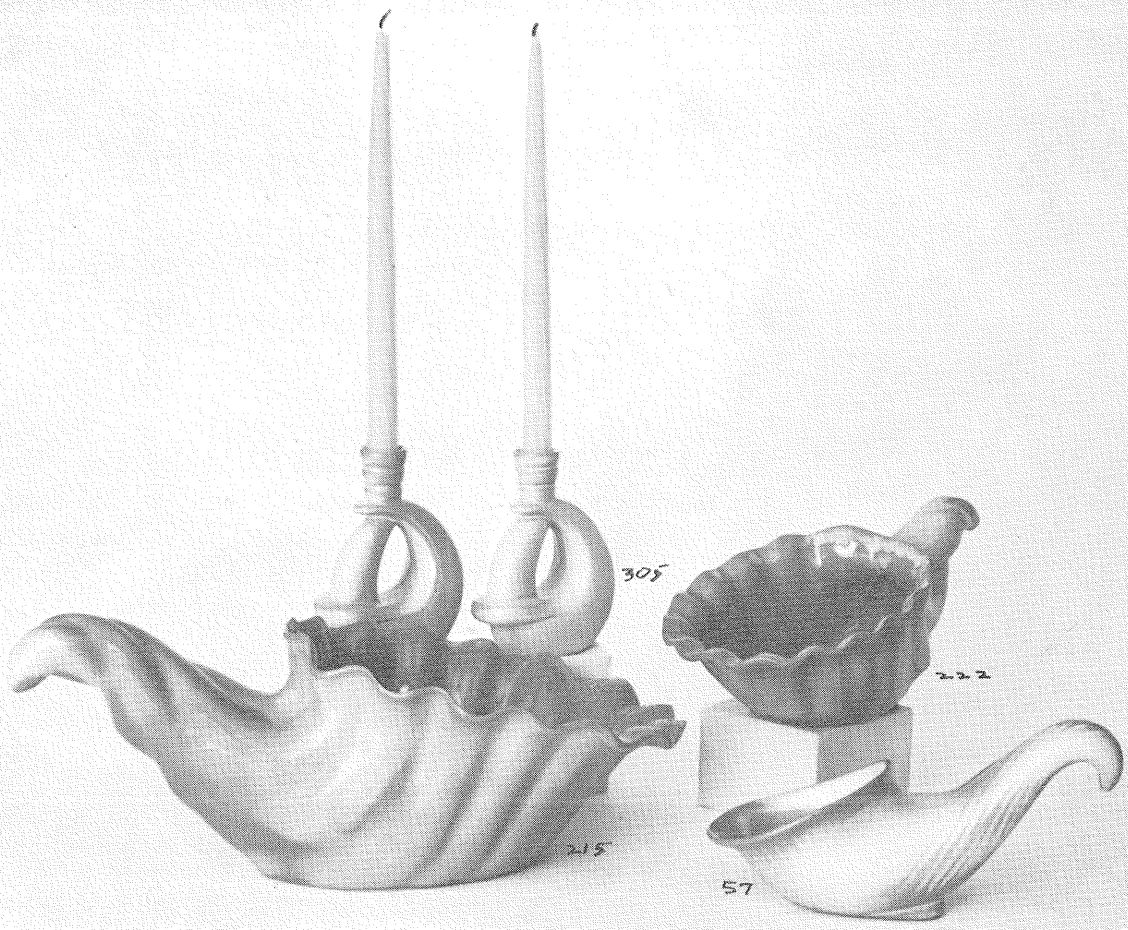
- 4—desert cactus vase, 7 in. . . . . 1.50
- 45—slender bowl, 12 in. . . . . 2.00
- 63—pillow vase, 7 in. . . . . 1.50
- 68—cube vase, 5 in. . . . . 1.50
- 203—knobby cactus bowl,  
10 in. . . . . 2.00
- 304—double candle holders,  
pair . . . . . 2.00
- 60B—goose vase, 6 in. . . . . 1.50
- 458—8 in. ash tray,  
felted . . . . . 1.50
- 97D—2 qt. barrel pitcher 2.00
- 97M—16 oz. mug . . . . . 1.00
- 97U—10 oz. covered  
ramkin . . . . . 1.00
- 97V—2 qt. barrel baker . . . 2.00

434—mallard  
duck book ends,  
on black walnut  
bases, felted,  
pair . . . . . 8.00

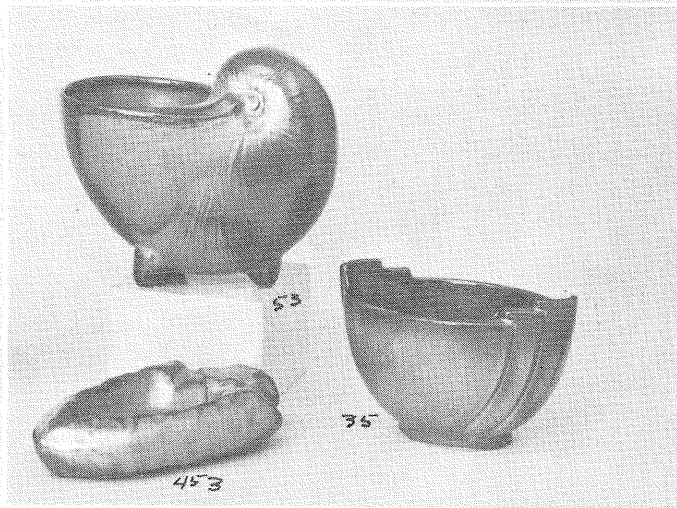
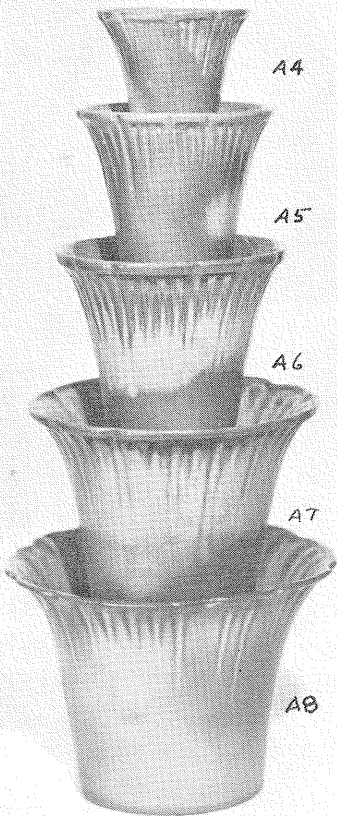


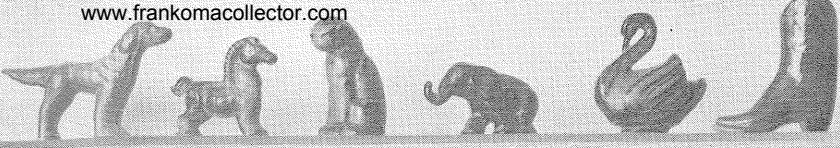
464—10½ in. large square ash  
tray, felted . . . . . 5.00





- A4—4 in. flower pot . . . . . 50
- A5—5 in. flower pot . . . . . 75
- A6—6 in. flower pot . . . . . 1.00
- A7—7 in. flower pot . . . . . 1.25
- A8—8 in. flower pot . . . . . 1.50
- 7—free form vase, 7 in. . . . . 1.50
- 9L—low textured bowl,  
11 in. . . . . 2.00
- 35—carved, shaped bowl,  
6 in. . . . . 1.00
- 53—chambered nautilus  
vase, 6 in. . . . . 1.50
- 57—small cornucopia,  
10 in. . . . . 1.50
- 200—wedding ring bowl,  
12 in. . . . . 3.50
- 212—deep round bowl,  
7½ in. . . . . 1.50
- 215—large cornucopia,  
15 in. . . . . 7.00
- 218—round swirl bowl,  
12 in. . . . . 2.00
- 219—large centerpiece  
bowl, 18 in. . . . . 5.00
- 222—medium cornucopia,  
12 in. . . . . 2.50
- 305—single candle holders,  
pair . . . . . 2.00
- 453—arrowhead ash tray . . . . . 1.00

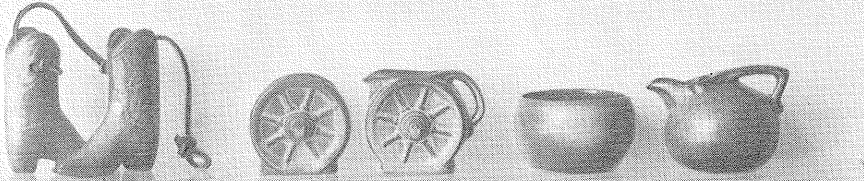




162      161      165      169      168      507



511      562      550      551      500      135



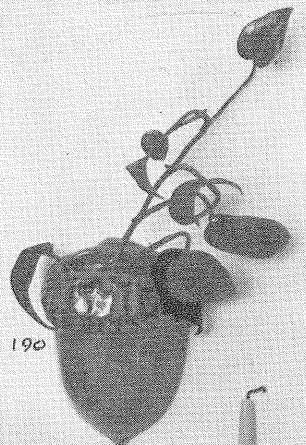
507S      510      560      504      553



47H      165H      49H      48H      94H      97H



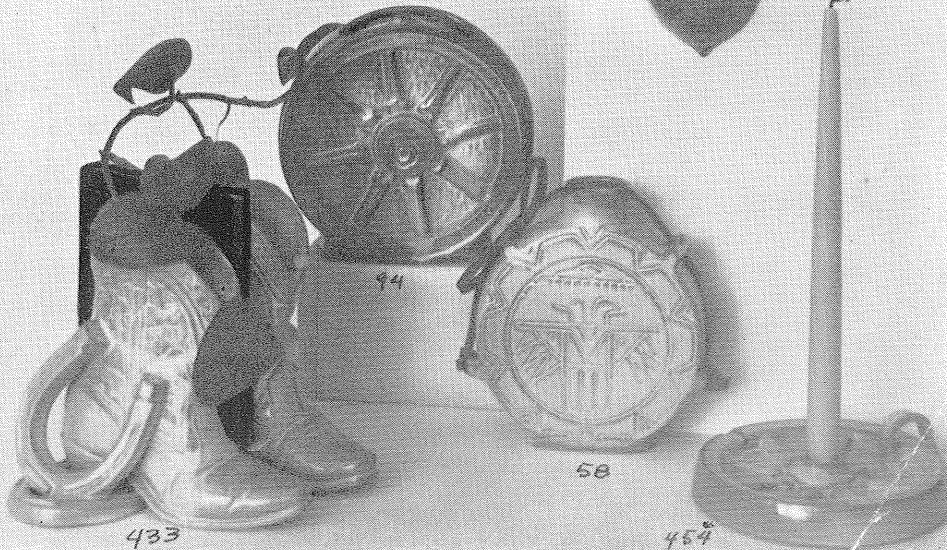
138      133      456      31      32



190



93      90C



433      94      58      454

- miniature animals . . . . . 50
- miniature vases . . . . . 50
- miniature pitchers . . . . . 50
- salt and peppers, pair . . . . . 1.00
- 31—bud vase . . . . . 50
- 32—bud vase . . . . . 50
- 59—Indian design hanging canteen . . 1.50
- 93—24 oz. pitcher . . . . . 1.50
- 93 set—pitcher and 6 cups . . . . . 3.50
- 90C—3 oz. cups . . . . . 40
- 94—wagon wheel vase, 7 in. . . . . 1.50
- 133—cowboy boot vase, 6½ in.  
for table or wall . . . . . 1.50
- 135—Indian head wall plaque . . . . . 50
- 138—circus horse, 6 in. . . . . 1.00
- 190—acorn wall vase, 5½ in. . . . . 1.00
- 433—cowboy boot planter book ends,  
pair . . . . . 5.00
- 454—wagon wheel candle holder  
ash tray . . . . . 1.50
- 456—ash tray . . . . . .60
- 507S—2 boots on leather thong . . . . 1.00

TERMS OF SALES: Prices are net. Please add 2% for State Sales Tax and 25% for Packing and Shipping. Any excess charges will be refunded.

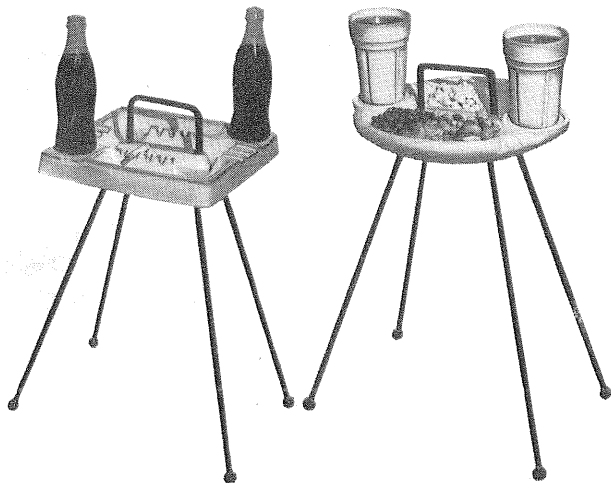
**1955**

**CERAMIC AWARD WINNER**

**Hess Bros. National Contest for Versatility in Design and Use**



36M—With magazine rack, as shown . . . . . \$7.50  
34M—Same with square tray . . . . . \$7.50



34—10½ in. square \$6.50  
36—12 in. long \$6.50

**FRANKOMA'S "SERVA-TRAY"**

- Designed for the Sheer Pleasure of Casual Living.
- Beautiful Hi-Fired Ceramic Tray. Washes Like a Dish. Will Not Stain or Spot.
- Sturdy Bonderized Wrought Iron. Will Not Rust.
- Refreshment Corners for Drinks.
- For Smokers and Snackers at the T-V. On the Patio — or Anywhere.
- Tray Can't Fall Off When Carrying the Stand.
- Not Top-Heavy — A Joy With Children Around.
- Chair-High, 20 in., Large and Roomy.
- Magazine Rack for Convenience.
- Either Shape in Black, White, Green, or Gold.

FRANKOMA is ovenproof but does not claim to be flame-proof. You will find it very durable and serviceable wherever china or pottery can be used. It is designed to be entirely satisfactory and we would appreciate letting the factory know of any deviation from this standard.

You are a welcomed guest at the factory any time. Should you come during working hours, we will be glad to conduct you through the plant to see FRANKOMA made.

**FRANKOMA POTTERY**

—ON OLD KILN ROAD—

**SAPULPA, OKLAHOMA**